

# 4900 Series Hi-Velocity Air/Dirt Separators

## Submittal Data

Submittal No: 401-094 | Effective: May 6, 2022 | Supersedes: January 10, 2017

JOB: \_\_\_\_\_

REPRESENTATIVE: \_\_\_\_\_

ENGINEER: \_\_\_\_\_

CONTRACTOR: \_\_\_\_\_

### PRODUCT DATA

ITEM NO. \_\_\_\_\_ LOCATION \_\_\_\_\_

MODEL NO. \_\_\_\_\_ QUANTITY \_\_\_\_\_

GPM \_\_\_\_\_

### SPECIFICATIONS

- Designed and constructed per ASME Code Section VIII Div. 1
- Registered with the National Board of Pressure Vessel Manufacturers
- Standard Design Pressure and Temperature: 150 psi @ 240°F
- Particle removal down to 5 microns
- Construction: Carbon Steel with exterior red oxide primer finish
- 304 Stainless Steel Coalescence Pall Rings
- Taco 4900 units are designed to be self-supporting in the piping system. Factory review is necessary should any piping loads be present.

### FACTORY INSTALLED

- Air Vent is suitable for water, max. 50% glycol
- Blowdown Valve
- Flush Valve

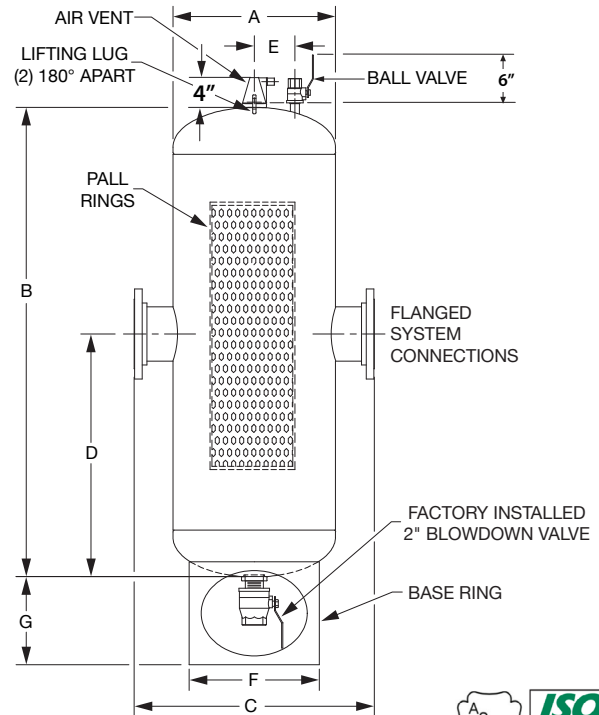
### OPTIONS

- Higher Design Pressures and Temperatures - Consult factory
- Base Ring
  - Standard on (4918 thru 4936)
- High Power Switchable On/Off Style Magnet - Consult factory

**CAUTION: LIFTING LUGS FOR RIGGING AND LIFTING USE ONLY, NOT FOR ANCHORING OR HANGING.**

### SIZES & DIMENSIONS

All dimensions shown are subject to change and should not be used for prepping. Contact your local Taco representative should certified dimensional drawings be required.



PIPE SIZE	MODEL NUMBER	A DIA. (INCH)	B MAX. (INCH)	C (INCH)	D (INCH)	E (INCH)	F DIA. (INCH)	G (INCH)	GPM @ 11 ft. /sec	APPROX. WEIGHT (LBS.)
18	4918ADH-150	42	121	57	61 3/4	10 1/2	38	12 3/4	8246	2930
20	4920ADH-150	48	132	62	67 9/16	12	44	12 5/8	10238	3705
22	4922ADH-150	54	143	67	75 3/4	13 1/2	50	13 1/8	11874	5350
24	4924ADH-150	54	148	67	72 3/4	13 1/2	50	13 1/8	14245	5890
26	4926ADH-150	60	165	74 1/2	84 1/4	15	54	14	17167	8430
30	4930ADH-150	66	186	82	95 1/4	15	60	14 13/16	23037	10630
36	4936ADH-150	84	219	104	113 7/8	15	78	15 3/8	33457	21460

### COMMENTS